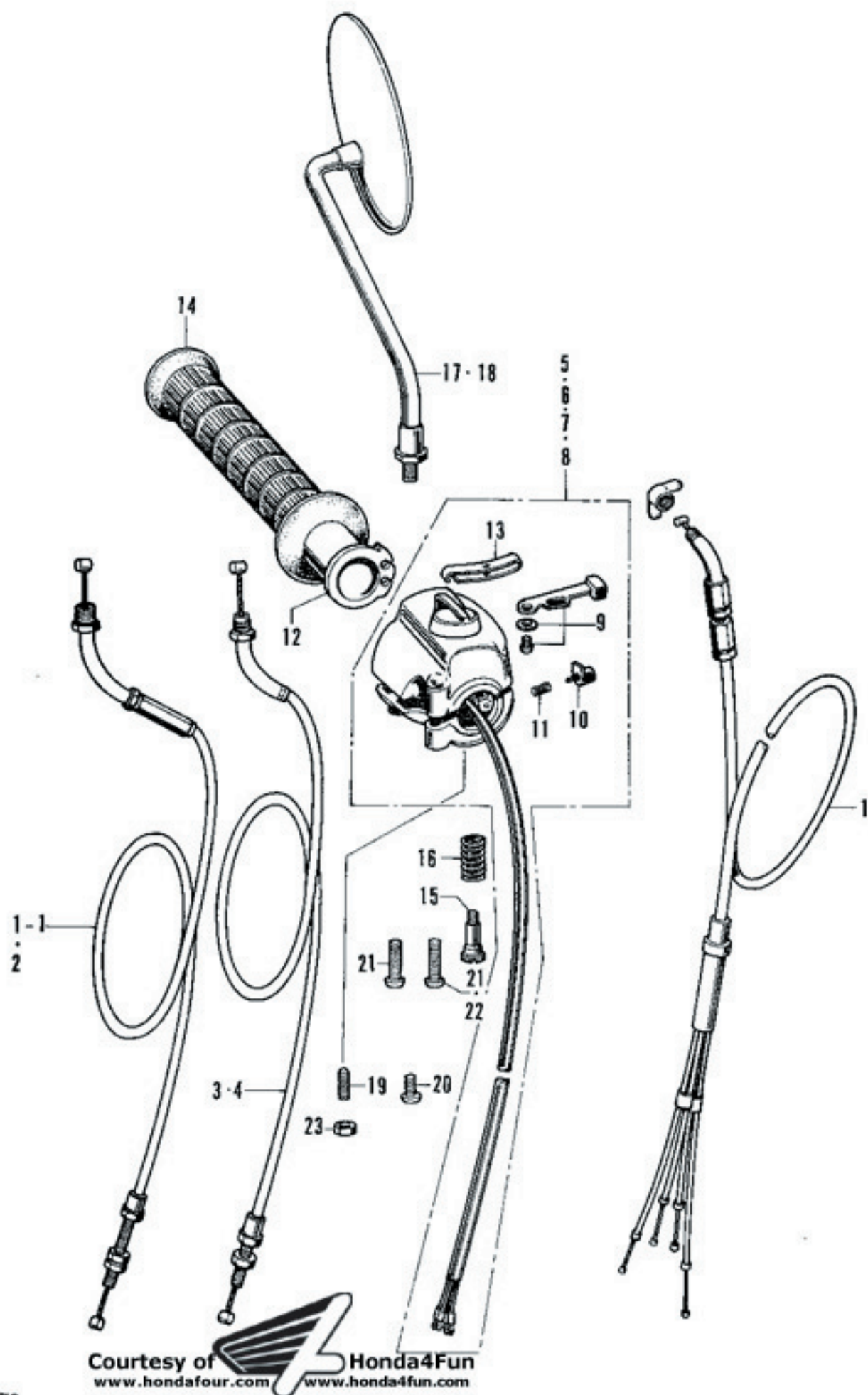


E-26 Carburetor (KEIHIN)

Ref. No.	Part No.	Description	Reqd. No. U1700	F.R.T.	Remarks
66	95001-35320	TUBE, fuel, 2.5x20	2		
67	95001-35240	TUBE, fuel, 3.5x240	2		
68	05002-02070	CLIP, D7 tube	4		CR750E-1000001~
69	99114-246-1100	JET, main, #110 (STD.)	4		CR750E-2000001~
	99114-246-1150	JET, main, #115	(4)		
	99114-246-1200	JET, main, #120	4		~1132192
	99114-246-1250	JET, main, #125	(4)		
	99114-246-1300	JET, main, #130	(4)		
	99114-246-1350	JET, main, #135	(4)		
	99114-246-1400	JET, main, #140	(4)		
	99114-246-1450	JET, main, #145	(4)		
	99114-246-1500	JET, main, #150	(4)		
	99114-246-1550	JET, main, #155	(4)		
70	99124-300-0350	JET, slow, #35	(4)		~1132192
	99124-300-0380	JET, slow, #38	(4)		~1132192
	99124-300-0400	JET, slow, #40	4		~1132192
	99124-300-0420	JET, slow, #42	(4)		~1132192
	99124-300-0450	JET, slow, #45	(4)		~1132192
	99124-300-0480	JET, slow, #48	(4)		~1132192
○	99124-076-0350	JET, slow, #35	(4)		CR750E-2000001~
○	99124-076-0380	JET, slow, #38	(4)		CR750E-2000001~
○	99124-076-0400	JET, slow, #40	4		CR750E-2000001~
○	99124-076-0420	JET, slow, #42	(4)		CR750E-2000001~
○	99124-076-0450	JET, slow, #45	(4)		CR750E-2000001~

F-1 R/H Handle Switch - Cable

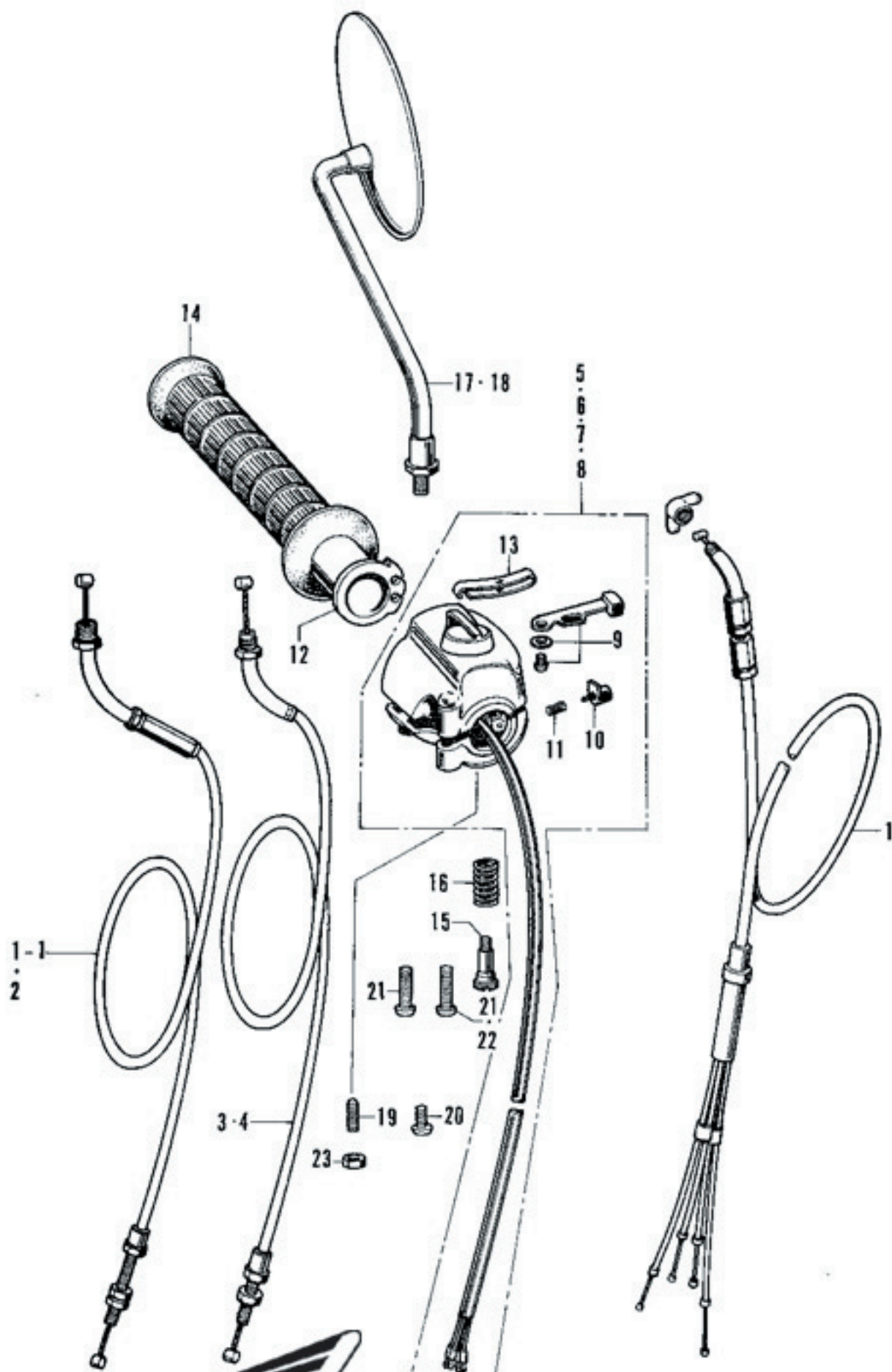


Courtesy of  Honda4Fun
www.honda4fun.com

F-1 R/H Handle Switch - Cable

Ref. No.	Part No.	Description	Reqd. No.			F.R.T.	Remarks
			08	09	09		
			750	75061	75042		
1	17910-300-010	(Replaced with 17910-300-030)					~1017341
	17910-300-030	CABLE COMP., throttle	1	-	-	0.4	CB750-1017342~1044649
		(Used in U.S.A. & Australia)					
1-1	17910-300-040	CABLE COMP. A, throttle	-	1	-	0.6	CB750-1044650~
		(Used in U.S.A., Australia & General export)					
○	17910-341-000	CABLE COMP. A, throttle	-	-	1		
		(Used in U.S.A. & General export)					
2	17910-300-610	CABLE COMP. A, throttle	-	1	-	0.6	CB750-1053409~
		(Used in England, Germany, France, Netherlands & E.D.)					
○	17910-341-611	CABLE COMP. A, throttle	-	-	1		
		(Used in England, Germany, France & E.D.)					
3	17920-300-000	CABLE COMP. B, throttle	-	1	-	0.6	CB750-1044650~
		(Used in U.S.A., Australia & General export)					
○	17920-341-000	CABLE COMP. B, throttle	-	-	1		
		(Used in U.S.A. & General export)					
4	17920-300-610	CABLE COMP. B, throttle	-	1	-	0.6	CB750-1053409~
		(Used in England, Germany, France, Netherlands & E.D.)					
○	17920-341-611	CABLE COMP. B, throttle	-	-	1		
		(Used in England, Germany, France & E.D.)					
5	35300-300-043	SWITCH ASSY., starter lighting kill (TOYO)	1	-	-	0.3	CB750-1005130~1053398
		(Used in Australia)					
	35300-300-053	SWITCH ASSY., starter lighting kill (TOYO)	-	1	-		CB750-1053309~
		(Used in Australia)					
6	35300-300-620	SWITCH ASSY., starter dimmer kill	1	-	-	0.3	CB750-1003480~1053398
		(Not used in Australia & U.S.A.)					
	35300-300-621	SWITCH ASSY., starter dimmer kill	-	1	-		CB750-1053399~
		(Not used in Australia, U.S.A., General export & E.D.)					
7	35300-300-672	SWITCH ASSY., starter lighting kill	1	-	-	0.3	~1044649
		(Used in U.S.A.)					
	35300-300-673	(Superseded by 35300-300-674)					
	35300-300-674	SWITCH ASSY., starter lighting kill	-	1	1		CB750-1044650~
		(Used in U.S.A. & General export)					
8	35300-300-730	SWITCH ASSY., starter dimmer kill	-	1	-	0.3	
		(Used in E.D.)					
○		(Used in England, Germany, France & E.D.)	-	-	1		
9	35315-235-000	KNOB, lighting switch	1	1	1	0.4	
10	35317-001-310	BUTTON, horn push	1	1	1	0.2	

F-1 R/H Handle Switch · Cable



Courtesy of  Honda4Fun
www.honda4fun.com

F-1 R/H Handle Switch · Cable

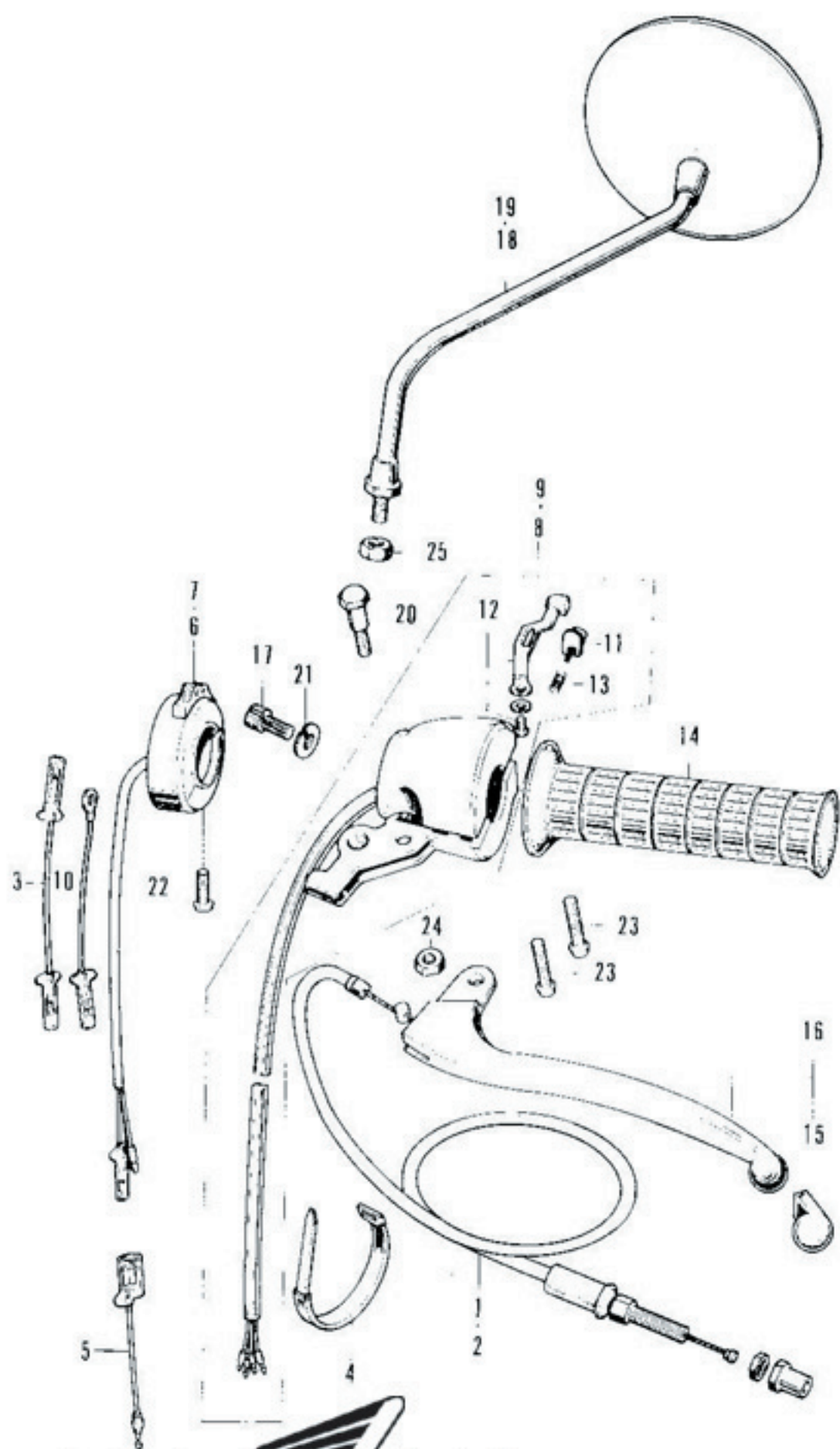
Ref. No.	Part No.	Description	Reqd. No.			F.R.T.	Remarks
			CB 790	CB 790E1	CB 790E2		
* 11	35318-259-000	SPRING, horn button	1	1	1	0.2	
12	53141-240-000	PIPE, throttle grip	1	-	-	0.2	~1044649
	53141-300-010	PIPE, throttle grip	-	1	1		CB750-1044650~
13	53163-205-010	ADJUSTER, throttle grip	1	-	-	0.2	~1011718
	53163-300-010	ADJUSTER, throttle grip	1	1	1		CB750-1017630~
14	53165-283-000	(Superseded by 95011-14100)					
○	95011-14100	GRIP D, right handle	1	1	-	0.1	
○	53165-342-670	RUBBER, right grip	-	-	1		
15	53190-300-000	BOLT, throttle grip adjusting.....	-	1	1	0.1	CB750-1044650~
16	53191-300-000	SPRING, throttle adjuster	-	1	1	0.1	CB750-1044650~
17	88110-300-000	MIRROR, right back.....	1	-	-	0.1	~1044649
	88110-074-000	MIRROR, right back.....	-	1	1		CB750-1044650~ *
○18	88110-304-621	MIRROR, right back (Used in France)	1	1	1		
19	90124-292-000	SCREW, throttle grip adjusting.....	1	-	-	0.1	~1011718 CB750-1017630~1044649
20	93500-05006-0A	SCREW, pan, 5×6.....	1	-	-		CB750-1011719~1017629
21	93500-05025-0A	SCREW, pan, 5×25	2	1	1		
22	93500-05032-0A	SCREW, pan, 5×32	-	1	1		CB450-1044650~
23	94001-05000-0S	NUT, hex., 5 mm	1	-	-		~1011718 CB750-1017630~1044649



 Courtesy of **Honda4Fun**
www.hondafour.com www.honda4fun.com

* CB750-1053399 and subsequent are available for the other markets except for U.S.A.

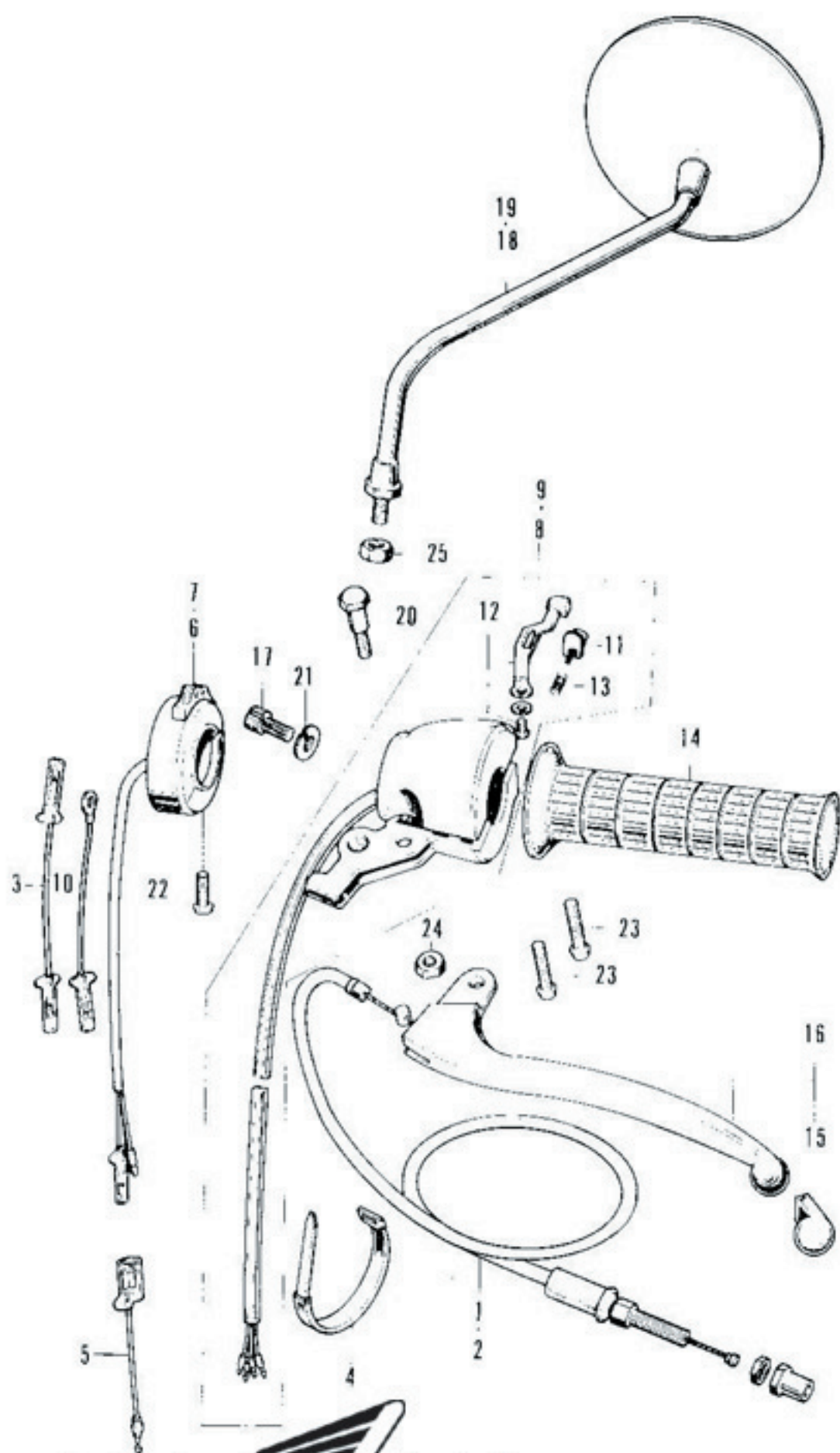
F-2 L H Handle Switch · Cable



Courtesy of  Honda4Fun
www.honda4fun.com

F-2 L/H Handle Switch · Cable

Ref. No.	Part No.	Description	Reqd. No.			F.R.T.	Remarks
			01 790	02 790E1	03 790E2		
1	22870-300-000	CABLE COMP., clutch..... (Used in U.S.A., Australia & General export)	1	1	-	0.4	
○	22870-341-010	CABLE COMP., clutch..... (Used in U.S.A. & General export)	-	-	1		
2	22870-300-610	CABLE COMP., clutch..... (Used in England, Germany, France, Netherlands & E.D.)	-	1	-		CB750-1053409~
○	22870-341-610	CABLE COMP., clutch..... (Used in England, Germany, France & E.D.)	-	-	1		
3	32101-300-620	HARNESS, sub wire (Used in France)	1	-	-	0.1	CB750-1003480~1004858
4	32161-268-000	BAND A, wire harness	2	2	-	0.1	
○	95014-61100	BAND A1, wire	-	-	2		
○	33605-341-671	SUB-CORD A, winker.....	-	-	1		
6	35150-300-620	SWITCH ASSY., optional (Used in France)	1	1	-	0.1	CB750-1003480~
7	35150-300-730	SWITCH ASSY., lighting (Used in E.D.) ... (Used in England, Germany, France & E.D.)	-	1	-	0.1	
8	35250-300-033	SWITCH ASSY., winker horn	1	1	-	0.1	
○	35250-341-672	SWITCH ASSY., winker horn & buzzer ... (Used in U.S.A. & General export)	-	-	1		
9	35250-300-620	SWITCH ASSY., winker horn	1	1	-	0.1	CB750-1003480~
○	35250-323-013	SWITCH ASSY., winker horn passing	-	-	1		
10	38101-300-620	WIRE, horn (Used in France)	1	-	-	0.1	CB750-1003480~1004858
11	35317-001-310	BUTTON, horn push	1	1	-	0.2	
12	35317-235-000	KNOB, horn switch	1	1	1	0.3	
13	35318-259-000	SPRING, horn button	1	1	-	0.3	
14	53166-283-000	(Superseded by 95011-14200)					
○	95011-14200	GRIP D, left handle	1	1	-	0.2	
○	53166-342-670	RUBBER, left grip.....	-	-	1		
15	53180-286-000	CAP, control lever.....	1	1	1	0.1	



F-2 L/H Handle Switch · Cable

Ref. No.	Part No.	Description	Reqd. No.			F.R.T.	Remarks
			08	08	09		
			750	750K1	750K2		
16	53190-286-670	LEVER COMP., left handle	1	1	1	0.1	
17	53192-268-000	BOLT, clutch wire adjusting	1	1	1	0.1	
18	88120-300-000	MIRROR, left back	1	-	-	0.1	~1044649
	88120-074-000	MIRROR, left back	-	1	1		CB750-1044650~ *
○19	88120-304-621	MIRROR, left back (Used in France)	1	1	1		
20	90114-268-020	BOLT, handle lever pivot	1	1	1	0.1	
21	90321-292-000	(Superseded by 90321-315-670)					
○	90321-315-670	NUT, fixing	1	1	1	0.1	
22	93500-04016-0A	SCREW, pan, 4×16 (Used in France & E.D.) (Used in England, Germany, France & E.D.)	1	1	-		CB750-1003480~
			-	-	1		
23	93500-05025-0A	SCREW, pan, 5×25	2	2	2		
24	94001-06000	NUT, hex., 6 mm	1	1	1		
25	94001-10000-0S	NUT, hex., 10 mm	2	2	2		

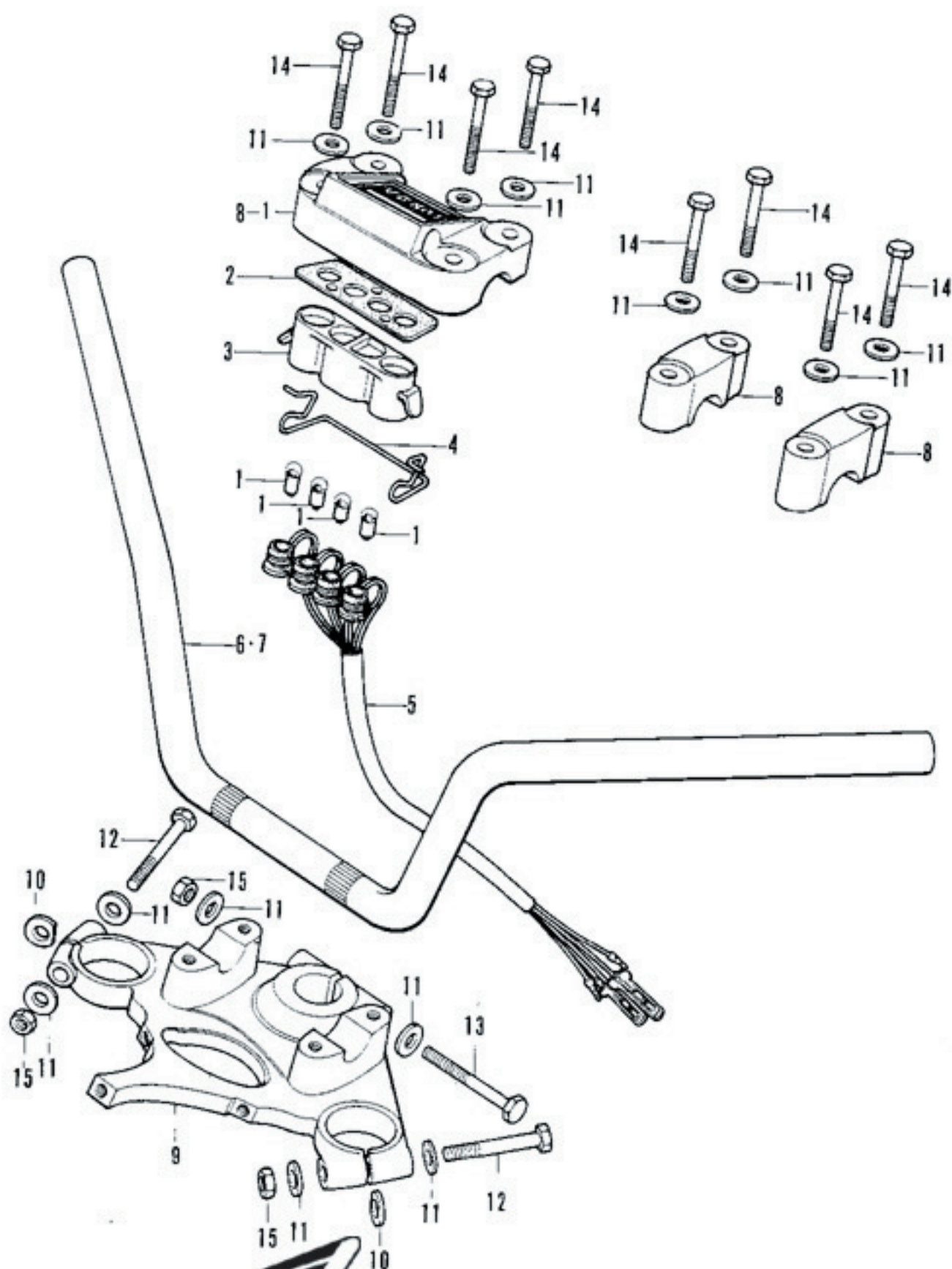


 Courtesy of **Honda4Fun**

www.honda4fun.com

* CB750-1063389 and subsequent are available for the other markets except for U.S.A.

F-3 Handle · Top Bridge



Courtesy of  Honda4Fun
www.honda4fun.com